



ROCKHAMPTON REGION

RESOURCES PROSPECTUS



YOUR GUIDE TO CENTRAL
QUEENSLAND'S MINING HUB, AND
HOW WE CAN HELP YOU.



advancerockhampton.com.au



ROCKHAMPTON IS THE MINING SERVICE HUB FOR MINES OF THE BOWEN AND GALILEE BASINS

ROCKHAMPTON REGION

Since its establishment in 1859, the Rockhampton region has proudly served as the vibrant economic heart of Central Queensland with particular strengths and connections to the mining, energy and resource sectors.

Over the next four years, we anticipate an exciting influx of projects totalling approximately \$12 billion which will assist in unlocking our region's distinctive mineral deposits crucial to Queensland's energy transition.

With its extensive air, road, rail, and sea infrastructure, Rockhampton stands as a strategic gateway to both Northern Australia and global markets, offering unparalleled access and opportunities.

As we actively promote investment, it's imperative that we simultaneously nurture our existing businesses, seize new prospects, and foster sustainable job creation and population growth.

The mining and resources industry underpins much of Rockhampton's economic development and prosperity, however Rockhampton Regional Council recognises that the world is transitioning to a low-carbon economy and the Rockhampton Region is proactively gearing up to take advantage of the positive impacts this will have on our community.

I take immense pride in our region and firmly believe that we are in an excellent position to attract new investments in the mining, energy and resources sector and foster partnerships that will enable us to seize the vast economic opportunities that lie ahead in the coming years.



MAYOR TONY WILLIAMS
Rockhampton Regional Council

ADVANCE ROCKHAMPTON

As the lead economic development agency of Central Queensland, Advance Rockhampton is proud to be part of Rockhampton Regional Council's commitment to drive economic growth. Advance Rockhampton's vision is to spread the word nationally and globally that our region is the best place to live, visit and invest with a team of talented professionals dedicated to the economic heart of Central Queensland.

Advance Rockhampton and Rockhampton Regional Council are committed to our five-year economic strategy and action plan. Our economic mission is to support growing Rockhampton as the capital of Central Queensland and the region to become a more vibrant, diverse, and progressive place to live, visit and invest.

OUR FIVE ECONOMIC PILLARS

FUTURE JOBS AND INVESTMENT ATTRACTION

INFRASTRUCTURE FOR FUTURE GROWTH

REGIONAL PROMOTION AND MAJOR EVENTS

REGIONAL COLLABORATION AND PARTNERSHIP

TALENT RETENTION AND ATTRACTION

OUR RESOURCE SECTOR

ROCKHAMPTON IS THE MINING SERVICE HUB FOR MINES OF THE BOWEN AND GALILEE BASINS



KEY CONTRIBUTOR

\$2.4B

38% of Rockhampton's total GRP



LOCAL JOBS SUPPORTED

12,709

20% of Rockhampton's total employment



BIG SPENDER

\$839M

spent across 622 local businesses & 87 charities



GROWTH SECTOR

26%

Mining growth from 21/22 to 22/23.

Figures provided by the Queensland Resources Council 2022/23.



HOW WE CAN SUPPORT YOUR BUSINESS

ADVANCE ROCKHAMPTON CAN SUPPORT YOUR JOURNEY TO BECOME PART OF THE GROWING ROCKHAMPTON ECONOMY THROUGH THE FOLLOWING SUPPORT:

BUSINESS TO BUSINESS CONNECTIONS

Industry support and alignment with commercial opportunities.

DEVELOPMENT AND PLANNING ASSISTANCE

Services to assist with the development process which includes pre-lodgement planning meetings.

ECONOMIC IMPACT MODELLING

Economic impact analysis that explores how new projects can generate direct and indirect employment and broader economic outcomes for the Rockhampton Region.

INVESTMENT AND SITE TOURS

Local insight through site tours to understand the Rockhampton business and investment landscape.

TAILORED DATA

Site selection assessment, target market data and statistics relevant to the region.

SOLUTION BROKERING

Government introductions, business introductions, industry introductions, local content engagements and navigation.



Speak to Wade and the Advance Rockhampton team
+61 7 4936 8282
advancerockhampton.com.au
advancerockhampton@rrc.qld.gov.au



THE GATEWAY TO NORTHERN AUSTRALIA

OUR REGION

Positioned as the gateway to Northern Australia and international markets, Rockhampton is the economic heart of Central Queensland.

Well-connected and supported by major air, road, rail and sea infrastructure, the Region offers easy connectivity to:



MINING INDUSTRIES



CLEAN ECONOMY



MANUFACTURING

KEY INDUSTRY STATISTICS



PROJECT PIPELINE

\$12B

\$12 billion project pipeline to be rolled out over the next four years.



MINING AND RESOURCES HUB

\$2.4B

\$2.4b economic contributor representing 38% of our GRP.



SECURE WATER

5,900GL

12 Sydney Harbours flow through the Fitzroy annually.



AFFORDABLE LAND

\$125/M²

Industrial allotments from \$125/sq m for serviced hectare blocks at Gracemere Industrial Park.

INVESTMENT OPPORTUNITIES



CONSTRUCTION SERVICES



EQUIPMENT MAINTENANCE SERVICING



FABRICATION AND MANUFACTURING OF MODULAR AND MOBILE EQUIPMENT AND INFRASTRUCTURE



LAND REMEDIATION CONSULTANTS



PLANT AND EQUIPMENT SUPPLY



QUANTITY SURVEYORS AND ENGINEERING COMPANIES



RENEWABLE ENERGY RESEARCH AND INVESTMENT



TRAINING AND WORKFORCE RECRUITMENT

OUR ECONOMY

ROCKHAMPTON IS ONE OF AUSTRALIA'S MOST DIVERSE AND RESILIENT ECONOMIES:

- + **240,000 PEOPLE** located in Central Queensland
- + **84,500 PEOPLE** in the Rockhampton Region Local Government Area.
- + **\$6.3 BILLION GRP** (profile id economy) .
- + **45,000 LOCAL JOBS** in Rockhampton, growing 3.5% over the last year (salm, 2024).
- + As at March quarter 2024, Rockhampton had a residential **VACANCY RATE OF 0.7%** one of the lowest in Queensland.
- + **906HA THAT CAN YIELD 5,435 DWELLINGS** across the Rockhampton region local government area.
- + **5,549 BUSINESSES** in Rockhampton (profile id economy).

INVESTMENT DRIVERS

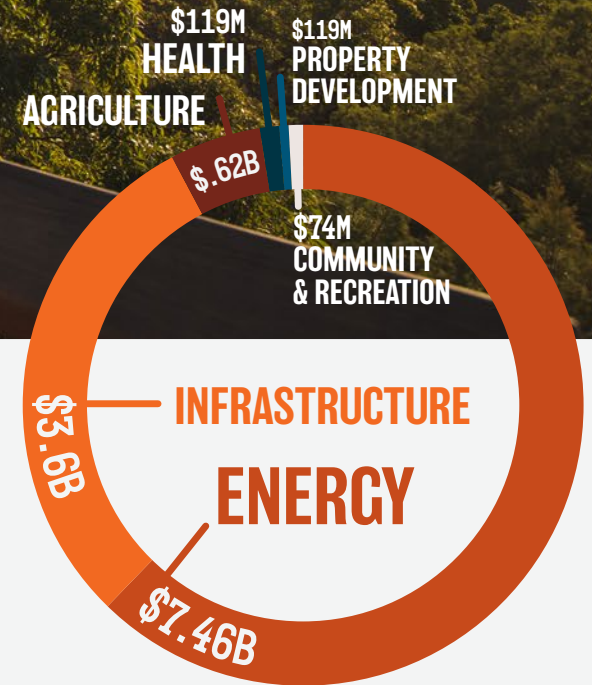
- + **A \$12 BILLION** major project pipeline across the Rockhampton region.
- + An estimated **9,000 ADDITIONAL JOBS** across the Regional economy over the next four years.
- + Approximately **1,700HA OF INDUSTRIAL ZONED LAND** across the region.
- + **ONE-HOUR** direct flight from Rockhampton to Brisbane.
- + Heavy lift capability and **INTERNATIONAL STANDARD RUNWAY** at the Rockhampton airport.
- + Port of Rockhampton (formerly Port Alma) shipping terminal **CAPABLE OF SPECIALISED CARGO**.
- + **ENRICHED WITH CRITICAL MINERALS AND RESOURCES**, the region can support the transition to the clean economy.
- + Well established **CONNECTED FREIGHT ROUTES** via the Capricorn, Bruce, Leichardt, and Burnett Highways.
- + The Fitzroy River is the **LARGEST AND MOST SECURE RIVER CATCHMENT** system on the eastern seaboard of Australia.



PROJECT PIPELINE

DRIVING INVESTMENT TO THE REGION IS A \$12 BILLION PROJECT PIPELINE.

\$12B
TOTAL



BARALABA SOUTH COAL MINE

CAPACITY +2.5MTPA
RESERVES 79 million tonnes
WORKERS 521
STATUS Early Planning
EXPECTED LIFE 23 years
COMMENCEMENT 2028/29

ROCKHAMPTON RING ROAD

VALUE \$1.7 BILLION
JOBS 780 construction
STATUS Construction
COMPLETION 2030/31

ROCKHAMPTON TO GLADSTONE PIPELINE

VALUE \$1 BILLION
JOBS 400 construction
STATUS Construction
COMPLETION 2026

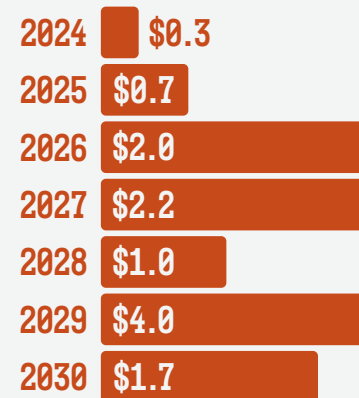
ROOKWOOD WEIR

VALUE \$569 MILLION
JOBS 230 construction
STATUS Complete
COMPLETION 2023

MOUNT MORGAN TAILINGS PROCESSING & REHABILITATION PROJECT

VALUE \$150 MILLION
JOBS 250 construction
 150 operational
STATUS Construction
COMPLETION 2025

BY INDUSTRY SECTOR 2024-2030



BY DATE OF COMPLETION

Source: Cordell Connect 2024
 *property development figure stated is a current not projected figure based on approved projects announced as at, 2024

MACKAY 30MIN
TOWNSVILLE 60MIN
CAIRNS 90MIN

Rockhampton is at the nexus of Qld's major regional highway and rail network

SHOALWATER BAY Training Area

Shoalwater serves as a training area for Australian, US, and Singaporean forces

A1 BRUCE HIGHWAY

Fitzroy Basin is the largest catchment flowing to Australia's east coast discharging 5,900 gigalitres annually

Byfield National Park

Fast access to Great Keppel Is and the Great Barrier Reef

LIVINGSTONE SHIRE

FITZROY RIVER

ROCKHAMPTON REGION

Capricorn Caves

Yeppoon

Surf Lakes

Mount Archer National Park

Emu Park

Rockhampton

Teys Rockhampton abattoir

Port of Rockhampton

Aquaculture development area

Bajool

Mount Morgan

Bouldercombe Battery

Mount Morgan Gold Mine

Boulder Creek

Mt Hopeful Wind

BANANA SHIRE

GLADSTONE REGION

A3 AUSTRALIA'S COUNTRY WAY

A5 LEICHHARDT HIGHWAY

Baralaba South Mine

Dawson Mine

BRISBANE 60MIN

Norwich Park Mine

Galilee Basin

German Creek Mine

Oaky Creek Mine

Bravus Carmichael Mine

Clermont

CENTRAL HIGHLANDS REGION

ISAAC REGION

Bowen and Galilee basin mines are connected to Rockhampton via rail

Curragh Mine

Emerald

Bluff

Blackwater

Rockhampton serves as the health and education hub for Central Queensland

A4 CAPRICORN HIGHWAY

Blackdown Tablelands National Park

BMA Blackwater

Woorabinda Aboriginal Shire

Duaranga

Gogango

Rookwood Weir

Westwood

Gogango Feedlot

Riverton Macadamias

Stanwell Power Plant

Gracemere Industrial Area

Moah Creek Wind & battery

Fitzroy River Plantation

Eden Bann Weir

Boomer Green Energy Hub

Goodedulla National Park

Lotus Creek Wind

Clarke Creek Wind

Carnarvon National Park

THE ECONOMIC HEART OF CENTRAL QUEENSLAND



SERVICE HUB

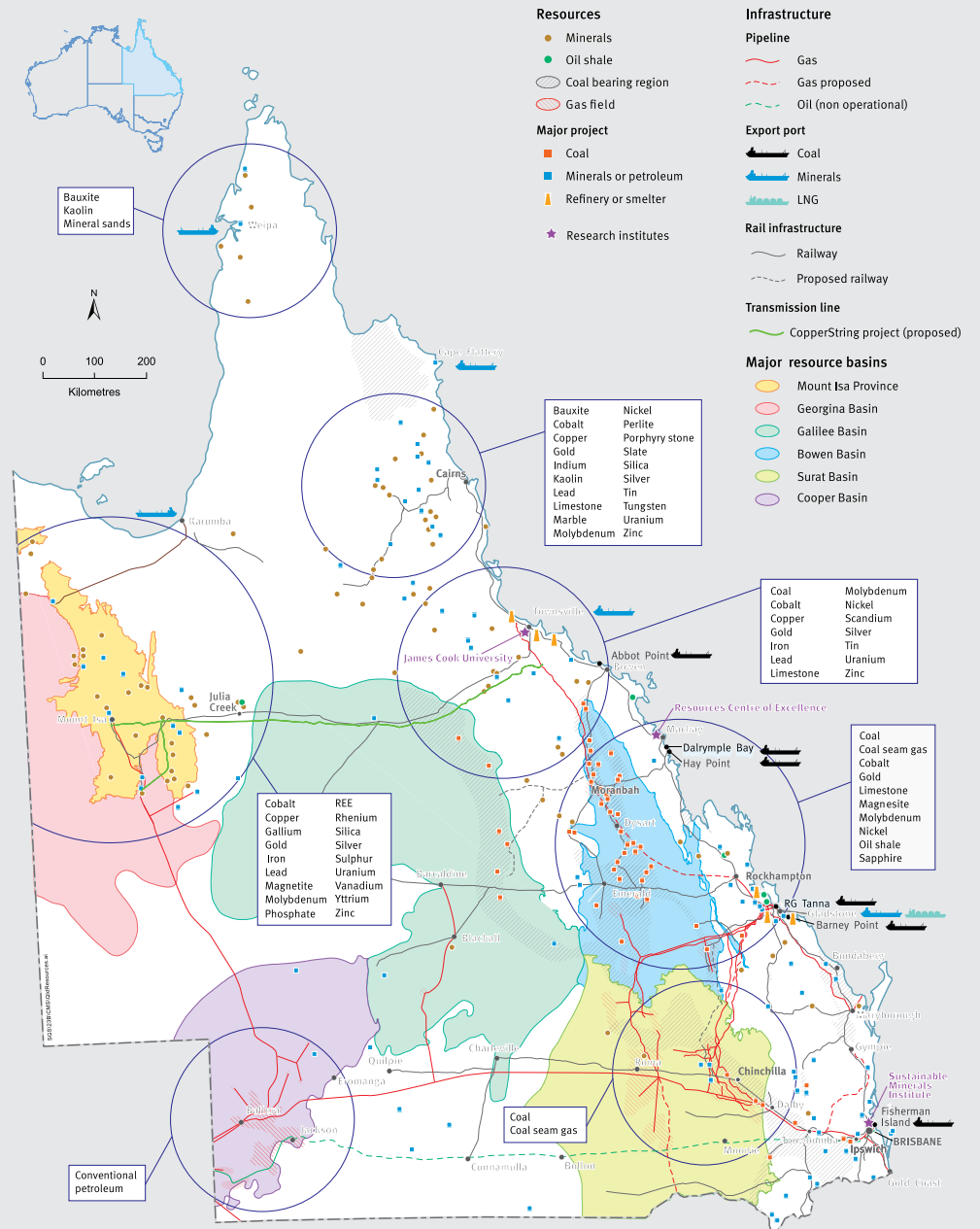
ROCKHAMPTON'S CENTRAL LOCATION MAKES IT THE IDEAL SERVICE HUB FOR THE BOWEN AND GALILEE BASINS

The Rockhampton Region has a 150-year connection with the resources and mining sector. This link started in 1858 with the Canoona Gold Rush and has continued to the present through the region's role as a major service centre for the Bowen, Galilee and Surat Basins.

There are over 40 coal mine sites within a 4-hour drive radius from the Rockhampton Region, between Moura and Moranbah. Recent years have brought a resurgence in the mining industry, with several key acquisitions, expansions, new operators and new projects clearing approvals and entering production. There are some 30 advanced coal projects in Queensland, including 20 greenfield, or new projects, and 10 brownfield expansions. Of these, 25 are in the Bowen Basin and following the successful commissioning of Bravus Carmichael Mine, more developments are planned for the Galilee Basin over coming years.

The Rockhampton Region also has a number of significant non-coal mineral deposits with high demand minerals, such as gold, magnetite, magnesium, nickel and cobalt. There are also other deposits in neighbouring areas throughout Central Queensland. Former mines in the Region such as Mount Morgan and Mount Chalmers are also looking to return to production through mining of previously uneconomical resources and the processing of tailings.

Stanwell Power Station, located 22km west of Rockhampton, is a highly automated power station recognised as one of the most efficient and economic coal-fired power stations in Australia. With the capacity to generate more than 1460 megawatts, it is one of the largest power generators in Queensland.



QUEENSLAND RESOURCES INDUSTRY, OPERATIONS, INFRASTRUCTURE & INSTITUTIONS

Map: Queensland Government Department of Resources 2023. resources.qld.gov.au

AIR, ROAD, AND SEA CONNECTIONS

ROCKHAMPTON IS STRATEGICALLY PLACED AS THE GATEWAY TO NORTHERN AUSTRALIA AND INTERNATIONAL MARKETS. THE REGION OFFERS THE FOLLOWING:

- + 23 and 25 metre B double and Type 1 road train access directly off Capricorn Highway to Gracemere.
- + 23 and 25 metre B double access directly off Bruce Highway to Parkhurst industrial estate.
- + Dedicated heavy rail and road routes.
- + Western realignment of the Bruce Highway creating the Rockhampton Ring Road and a third bridge which will link the industrial growth areas of Parkhurst and Gracemere.
- + Easy accessibility and connectivity to the Capricorn, Leichardt, and Bruce Highways.



PORT OF ROCKHAMPTON

(formerly Port Alma)

- + Largest hazardous goods hub in Australia.
- + Strategic advantage of a road transport corridor for specialised cargo.
- + 140ha of available storage on site.
- + B Double approved road network.
- + High berth availability and capability.
- + 3 berths operating services for defence vessel quarantine services with continuous 24/7 operations.

ROCKHAMPTON AIRPORT

- + Direct 1 hour flight from Rockhampton to Brisbane.
- + 3rd longest main runway in Queensland and the 5th longest in regional Australia.
- + The largest Local Government owned and operated airport in the nation by way of passenger numbers and aircraft movements as well as being ranked by the Bureau of Infrastructure Transport and Regional Economics as Australia's 9th busiest regional airport.

ENVIABLE LIFESTYLE

MAJOR EVENTS

The region hosts some of the biggest events in the country attracting several hundred thousand local and international attendees each year to events such as:

- + Rockynats
- + Rocky River Run
- + Rockhampton River Festival
- + CapriCon
- + Rockhampton Agricultural Show
- + Pop Up Polo
- + Capricorn Food & Wine Festival
- + Paradise Lagoons Campdraft
- + Queensland Touch Football Junior State Cup
- + Beef Australia (triennial)

During Rockhampton's major events it is not uncommon to see all accommodation booked out with many attendees' only option to stay out of town. This may provide the opportunity for accommodation operators and developers to tap into this unmet demand with the construction of new stock.

HEALTHCARE AND EDUCATION

Well established health and medical facilities, specialists and allied health professionals are all available in the region. Rockhampton also boasts world class education facilities with CQUniversity's main campus in Rockhampton. The region is highly regarded for the depth and diversity of teaching, research, vocational education, and training activities.

RESIDENTIAL AFFORDABILITY

Rockhampton is one of the most affordable regions along the eastern seaboard of Australia. As at the December quarter 2023, the median house price in Rockhampton Local Government Area was \$398,000 making it 59% more affordable than the Sunshine Coast, 52% than Greater Brisbane and 35% more affordable than the combined median price for regional Australia.



INDUSTRIAL PRECINCTS

1700 HA OF INDUSTRIAL LAND IS AVAILABLE ACROSS ROCKHAMPTON FOR DEVELOPMENT IN THE REGION.



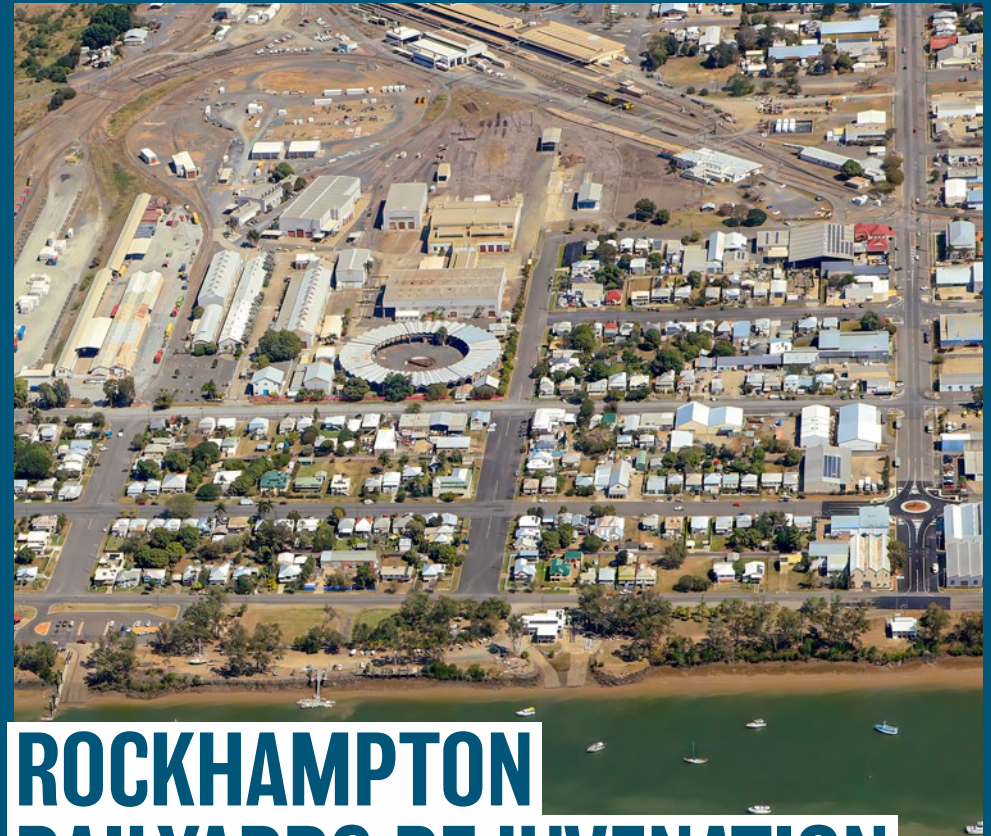
GRACEMERE INDUSTRIAL AREA

- + Situated 10km west of Rockhampton
- + Capable of handling 23 and 25 metre B doubles and Type 1 road trains directly off the Capricorn highway
- + Low, medium, and high impact zoned industrial land available
- + Easy accessibility to mining projects, agricultural food bowl and gas and energy developments
- + Opportunities for transport and logistics, advanced manufacturing and food and beverage processing sectors



PARKHURST INDUSTRIAL AREA

- + Situated 5km north of Rockhampton CBD
- + Good connectivity with North Coast Railway line
- + Shoalwater Bay Military Training Area located in the region
- + Future connectivity with Gracemere Industrial Area through construction of \$1.7 billion Rockhampton Ring Road
- + Low, medium, and high impact zoned industry land available
- + Opportunities for defence, mining, construction, and manufacturing sectors



ROCKHAMPTON RAILYARDS REJUVENATION

The Rockhampton railyards have been an important part of the Rockhampton community for more than 100 years.

Detailed planning is now underway to transform the old railyards into a commercial hub with community and recreational spaces.

The site totals 19 hectares and is made up of 2 precincts;

- + A Heritage Precinct and,
- + An Industrial Precinct.

The Industrial Precinct will focus on commercial use and will provide supply chain opportunities for a broad range of industries including rail, manufacturing and maintenance.

The rejuvenation of the Rockhampton railyards will:

- + Support Queensland's rollingstock supply chain capabilities and commercial growth in the manufacturing and maintenance industries
- + Provide a commercial hub for long-term tenancy opportunities
- + Establish a research centre into hydrogen-powered rollingstock
- + Invite community use and recreational activities
- + Celebrate the rich rail history and heritage value of the roundhouse.



CQUNIVERSITY SCHOOL OF MINING

THE MULTI-MILLION-DOLLAR PURPOSE-BUILT SCHOOL OF MINING WILL SUPPORT THE FUTURE TRAINING, WORKFORCE AND RESEARCH NEEDS OF THE MINING AND RESOURCES SECTORS IN ROCKHAMPTON.

FUTURE FOCUSED

The School of Mining at the CQUniversity Rockhampton North campus will deliver the Central Queensland region with a world-class facility to support the skills needs of future workforces that are directly and indirectly involved within the resources sector.

The facility will not only attract students to study in Central Queensland, but also provide the opportunity for students to train locally and gain specialist skills in cutting edge technologies and equipment. This will include the likes of virtual reality, drone operations and 3D printing.

The School of Mining will deliver vocational education and training, higher education, and professional short courses. Students will also learn about sustainable mining, renewable energy and energy recovery.

Central Queensland mining and resources industry partners will be enabled to access a highly skilled workforce within the region which will support regional Queenslanders to undertake the training they need for the jobs of the future within the resources sector, and to help drive future economic growth.

ROCKHAMPTON MANUFACTURING HUB

THE ROCKHAMPTON MANUFACTURING HUB WAS ESTABLISHED IN 2019 TO DELIVER EXPERT ADVICE AND SUPPORT FOR REGIONAL MANUFACTURERS TO TRANSITION TO ADVANCED MANUFACTURING.

Through the Manufacturing Hub, industry can access training and professional development, business development and advanced manufacturing support in consultation with a network of industry experts.

The Rockhampton Manufacturing Hub is an initiative of the Queensland Governments' Department of Regional Development, Manufacturing and Water.

The Hub offers Central Queensland manufacturing businesses involved in the resources and METS supply chain access to industry experts to support adoption of advanced manufacturing, business development and workforce development.

The local presence and ability to deliver place-based services and support has seen the Manufacturing Hub become a trusted partner for the region's manufacturing sector.

Key initiatives of the Rockhampton Manufacturing Hub include LEAN manufacturing, artificial intelligence and technology adoption, pre-qualification and accreditation of manufacturing businesses and industry transition programs for decarbonisation and sustainability.

The Manufacturing Hub services also have a focus on workforce skills development and training. Through a focus on vocational education and training, higher education and professional short courses, the Hub coordinates access to existing and emerging trade and professional skills, facilitates business and research collaboration, and supports industry to obtain recognised certifications.

Central Queensland Resources and METS industry partners can engage with the Rockhampton Manufacturing Hub to improve the supply chain of regional manufacturers.



Speak to Wade and the Advance Rockhampton team
+61 7 4936 8282 | wade.clark@rrc.qld.gov.au
advancerockhampton.com.au
advancerockhampton@rrc.qld.gov.au



Economic Development, Tourism,
Events and Marketing

220 Quay Street, Rockhampton Qld 4700
PO Box 1860, Rockhampton Qld 4700
07 4936 8282 or 1300 22 55 77
advancerockhampton.com.au